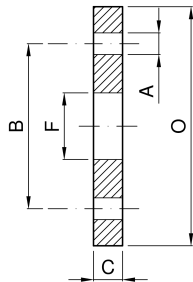


**Bride UNI EN 1092-1 01 PN6 (EX UNI 2276/67)**


Immagine  
momentaneamente  
non disponibile



<b>codice</b>	<b>DN</b>	<b>F</b>	<b>A</b>	<b>B</b>	<b>C</b>	<b>O</b>	<b>Fori n°</b>	
	<b>mm</b>	<b>mm</b>	<b>mm</b>	<b>mm</b>	<b>mm</b>	<b>mm</b>		<b>kg</b>
4.820.X9.08-A	15	22	11	55	12	80	4	0,33
4.820.X9.10-A	20	27,5	11	65	14	90	4	0,51
4.820.X9.13-A	25	34	11	75	14	100	4	0,62
4.820.X9.29-A	32	43	14	90	16	120	4	1,02
4.820.X9.38-A	40	49	14	100	16	130	4	1,18
4.820.X9.50-A	50	61,5	14	110	16	140	4	1,30
4.820.X9.65-A	65	77	14	130	16	160	4	1,63

<b>codice</b>	<b>DN</b>	<b>F</b>	<b>A</b>	<b>B</b>	<b>C</b>	<b>O</b>	<b>Fori n°</b>	
	<b>mm</b>	<b>mm</b>	<b>mm</b>	<b>mm</b>	<b>mm</b>	<b>mm</b>		<b>kg</b>
4.820.X9.71-A	80	90	18	150	18	190	4	2,63
4.820.X9.80-A	100	115,5	18	170	18	210	4	2,91
4.820.X9.82-A	125	141	18	200	20	240	8	3,90
4.820.X9.88-A	150	170	18	225	20	265	8	4,78
4.820.X9.92-A	200	221	18	280	22	320	8	6,91