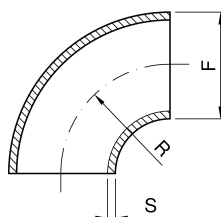
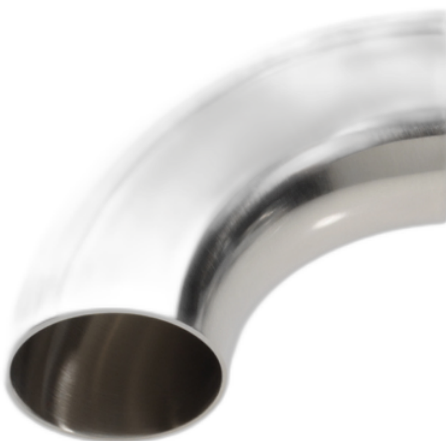


Costruzione valvole e raccorderia in acciaio inox

Coude 90° à souder satiné DIN 11852



codice	DN	F	S	R	
	mm	mm	mm	mm	kg
5.241.FF.06-B	15	19	1,5	35	0,02
5.241.FF.09-B	20	23	1,5	40	0,05
5.241.FF.12-B	25	29	1,5	50	0,06
5.241.FF.23-B	32	35	1,5	55	0,1
5.241.FF.32-B	40	41	1,5	60	0,15
5.241.FF.45-B	50	53	1,5	70	0,19
5.241.FF.66-B	65	70	2	80	0,41

codice	DN	F	S	R	
	mm	mm	mm	mm	kg
5.241.FF.72-B	80	85	2	90	0,53
5.241.FF.77-B	100	104	2	100	0,81
5.241.FF.81-B	125	129	2	188	
5.241.FF.86-B	150	154	2	225	
5.241.FF.90-B	200	204	2	300	