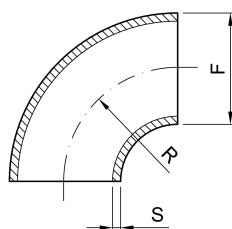


**90° welding bend**


<b>codice</b>	<b>DN</b>	<b>F</b>	<b>R</b>	<b>S</b>
	<b>mm</b>	<b>mm</b>	<b>mm</b>	<b>mm</b>
5.240.RR.21-A	20	20	34,5	1,5
5.240.RR.31-A	30	30	49,5	1,5
5.240.RR.37-A	40	43	64,5	1,5
5.240.RR.49-A	50	53	75	1,5
5.240.RR.60-A	60	63	94,5	1,5
5.240.RR.68-A	70	73	95	2
5.240.RR.74-A	80	84	126,5	2

<b>codice</b>	<b>DN</b>	<b>F</b>	<b>R</b>	<b>S</b>
	<b>mm</b>	<b>mm</b>	<b>mm</b>	<b>mm</b>
5.240.RR.79-A	100	104	150	2