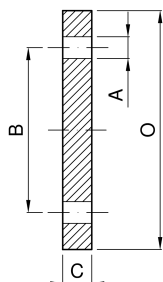


**Flange UNI UNI EN 1092-1 05 PN6 (EX UNI 2276/67)**


Immagine  
momentaneamente  
non disponibile



<b>codice</b>	<b>DN</b>	<b>O</b>	<b>B</b>	<b>C</b>	<b>Fori n°</b>	<b>A</b>	
	<b>mm</b>	<b>mm</b>	<b>mm</b>	<b>mm</b>		<b>mm</b>	<b>kg</b>
4.821.X9.08-A	15	80	55	12	4	11	0,44
4.821.X9.10-A	20	90	65	14	4	11	0,66
4.821.X9.13-A	25	100	75	14	4	11	0,82
4.821.X9.29-A	32	120	90	14	4	14	1,18
4.821.X9.38-A	40	130	100	14	4	14	1,39
4.821.X9.50-A	50	140	110	14	4	14	1,62
4.821.X9.65-A	65	160	130	14	4	14	2,14

<b>codice</b>	<b>DN</b>	<b>O</b>	<b>B</b>	<b>C</b>	<b>Fori n°</b>	<b>A</b>	
	<b>mm</b>	<b>mm</b>	<b>mm</b>	<b>mm</b>		<b>mm</b>	<b>kg</b>
4.821.X9.71-A	80	190	150	18	4	18	3,43
4.821.X9.80-A	100	210	170	18	4	18	4,22
4.821.X9.82-A	125	240	200	18	8	18	6,10
4.821.X9.88-A	150	265	225	18	8	18	7,51
4.821.X9.92-A	200	320	280	18	8	18	12,31