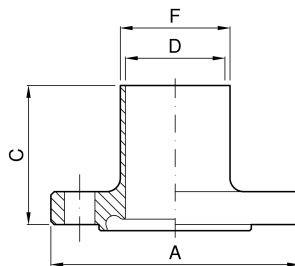


**Nut-Flange (with groove) DIN 11864-2/DIN 11853-2**


Immagine  
momentaneamente  
non disponibile



<b>codice</b>	<b>DN</b>	<b>A</b>	<b>F</b>	<b>D</b>	<b>C</b>	<b>E</b>	
	<b>mm</b>	<b>mm</b>	<b>mm</b>	<b>mm</b>	<b>mm</b>		<b>kg</b>
4.740.XF.02-B	10	54	13	10	41,5	4xM8x30	
4.740.XF.06-B	15	59	19	16	41,5	4xM8x30	
4.740.XF.09-B	20	64	23	20	41,5	4xM8x30	
4.740.XF.12-B	25	70	29	26	41,5	4xM8x30	
4.740.XF.23-B	32	76	35	32	46,5	4xM8x30	
4.740.XF.32-B	40	82	41	38	46,5	4xM8x30	
4.740.XF.45-B	50	94	53	50	46,5	4xM8x30	

<b>codice</b>	<b>DN</b>	<b>A</b>	<b>F</b>	<b>D</b>	<b>C</b>	<b>E</b>	
	<b>mm</b>	<b>mm</b>	<b>mm</b>	<b>mm</b>	<b>mm</b>		<b>kg</b>
4.740.XF.66-B	65	113	70	66	55,5	4xM8x30	
4.740.XF.72-B	80	133	85	81	59,5	4xM10x35	
4.740.XF.77-B	100	159	104	100	59,5	4xM10x40	
					DIN 11864		