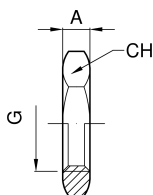


Nut exagonal BSP


codice	G	CH	A
	inch	mm	mm
4.610.A9.04-Y	¼	22	6
4.610.A9.05-Y	⅜	27	7
4.610.A9.08-Y	½	32	8
4.610.A9.10-Y	¾	37	9
4.610.A9.13-Y	1	46	10
4.610.A9.29-Y	1 ¼	55	11
4.610.A9.38-Y	1 ½	62	12

codice	G	CH	A
	inch	mm	mm
4.610.A9.50-Y	2	76	13
4.610.A9.65-Y	2 ½	95	