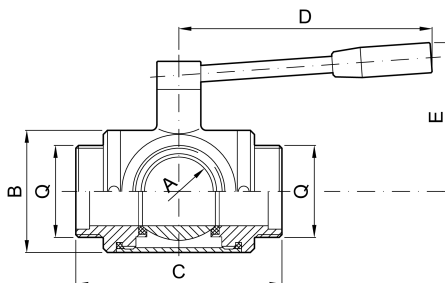


Three ways "L" ball valve male MACON ends


codice	MACON	A	M	C	D	E	PN bar	
	mm	mm	mm	mm	mm	mm		kg
2.302.QQ.37-C	40	40	55	172	190	110	25	7,50
2.302.QQ.49-C	50	50	67	183	184	101	16	9,10
2.302.QQ.55-C	60	50	79	183	184	101	16	10,00
2.302.QQ.68-C	70	65	89	196	245	121	15	11,00
2.302.QQ.74-C	80	80	102	233	311	139	10	22,50
2.302.QQ.79-C	100	100	125	286	310	160	6	35,50