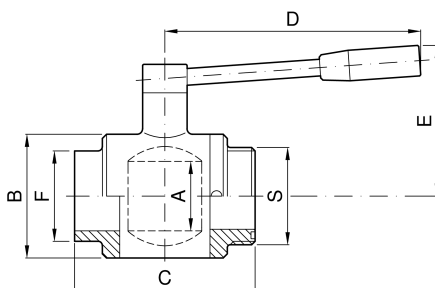


**“CLASSIC” ball valve WELDING-SMS MALE ends**


<b>codice</b>	<b>DN</b>	<b>F</b>	<b>S</b>	<b>A</b>	<b>B</b>	<b>C</b>	<b>E</b>	<b>D</b>	
	<b>mm</b>	<b>mm</b>	<b>mm</b>	<b>mm</b>	<b>mm</b>	<b>mm</b>	<b>mm</b>	<b>mm</b>	<b>kg</b>
2.100.JH.11-A	25	25,4	40	22	50	87	76	125	0,95
2.100.JH.24-A	38	38,1	60	36	62	96	84	140	1,60
2.100.JH.44-A	51	50,8	70	45	80	112	93	160	2,65
2.100.JH.58-A	63	63,5	85	57	101	134	115	184	4,20
2.100.JH.70-A	76	76,1	98	66	119	151	126	215	6,60
2.100.JH.76-A	101	101,6	132	100	162	204	161	275	14,10