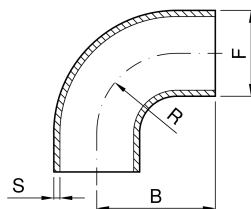


CURVA 90° ORBITALE A SALDARE SATINATA DIN 11865


codice	DN	F	S	R	B	
	mm	mm	mm	mm	mm	kg
5.291.GG.06-B	15	19	1,5	35	60	0,05
5.291.GG.09-B	20	23	1,5	40	65	0,06
5.291.GG.12-B	25	29	1,5	50	90	0,11
5.291.GG.23-B	32	35	1,5	55	95	0,16
5.291.GG.32-B	40	41	1,5	60	100	0,21
5.291.GG.45-B	50	53	1,5	70	110	0,30
5.291.GG.66-B	65	70	2	80	120	0,57

codice	DN	F	S	R	B	
	mm	mm	mm	mm	mm	kg
5.291.GG.72-B	80	85	2	90	145	0,78
5.291.GG.77-B	100	104	2	100	155	1,20
5.291.GG.81-B	125	129	2	188	270	2,10
5.291.GG.86-B	150	154	2	225	325	2,80