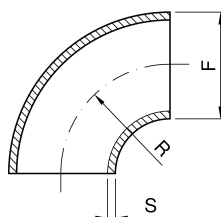
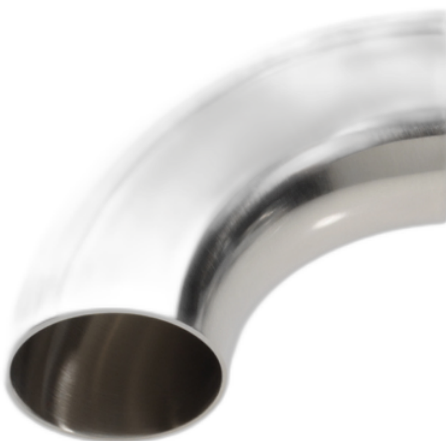


**CURVA 90° A SALDARE SATINATA DIN 11852 (PER TUBI DIN 11850 SERIE 2)**


<b>codice</b>	<b>DN</b>	<b>F</b>	<b>S</b>	<b>R</b>	
	<b>mm</b>	<b>mm</b>	<b>mm</b>	<b>mm</b>	<b>kg</b>
5.241.FF.06-B	15	19	1,5	35	0,02
5.241.FF.09-B	20	23	1,5	40	0,05
5.241.FF.12-B	25	29	1,5	50	0,06
5.241.FF.23-B	32	35	1,5	55	0,1
5.241.FF.32-B	40	41	1,5	60	0,15
5.241.FF.45-B	50	53	1,5	70	0,19
5.241.FF.66-B	65	70	2	80	0,41

<b>codice</b>	<b>DN</b>	<b>F</b>	<b>S</b>	<b>R</b>	
	<b>mm</b>	<b>mm</b>	<b>mm</b>	<b>mm</b>	<b>kg</b>
5.241.FF.72-B	80	85	2	90	0,53
5.241.FF.77-B	100	104	2	100	0,81
5.241.FF.81-B	125	129	2	188	
5.241.FF.86-B	150	154	2	225	
5.241.FF.90-B	200	204	2	300	